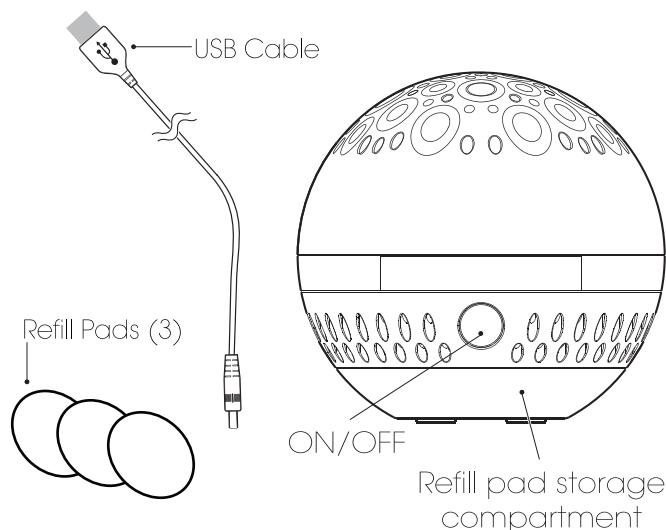


SERENE LIVING®

Please read the instructions before use.



Congratulations on your purchase of the Serene Living® AromaSphere Oil Diffuser.

Item No	551/609/610/611/612/613/614
Mode Misting	Continuous (no auto shut off)
Coverage	Up to 200 square feet
Voltage	USB DC 5V, 5V-1A
Rated Power	1.5W
Battery Power	2 AA Batteries
Adapter	100-240V Wall
Refill Pads	Type F

PRECAUTION 3

LIMITED ONE YEAR GUARANTEE

Please read the instructions carefully before using. Manufacturer accepts no liability for damage caused by incorrect use of the Aroma Sphere Oil Diffuser.

⚠ Warning and cautions ⚡ Not allowed ⚠ Strictly prohibited

⚠	1. Shut off and unplug the power before cleaning
⚡	2. Do not use detergents or abrasive agents to clean the diffuser unit
⚠	3. Clean the unit when changing to a different oil
⚠	4. Use the original adapter provided by the manufacturer
⚠	5. Do not take this unit apart exposing electrical parts. Call customer service for assistance and guarantee information.
⚠	6. Unplug or turn off the diffuser after each use to ensure longer use of this diffuser.

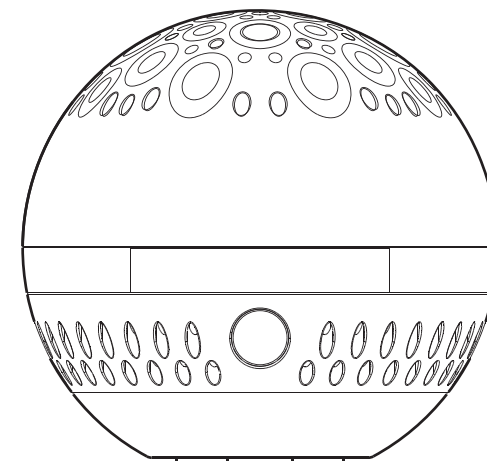
BATTERY DISPOSAL

Purchase of this diffuser includes a One Year Limited Guarantee that covers manufacturing defects. It excludes normal wear and tear, damage caused by improper use, oil damage to the outside of the diffuser or oil damage to any other personal materials that the oil may come into contact with.

If you believe your unit is defective or malfunctioning, please contact us at 888-548-0040.

Note that customers are responsible for return shipping costs if seeking replacement, even when covered by a guarantee. Manufacturer reserves sole discretion to determine whether replacement is needed. All diffusers sent to manufacturer for inspection must be clean and free of any oil residue or it will be returned without inspection.

THIS GUARANTEE IS EXCLUSIVE OF ALL OTHER GUARANTEES OFFERED BY THE MANUFACTURER, EXPRESSED OR IMPLIED, ALL OF WHICH ARE EXPRESSLY DISCLAIMED.



SERENE LIVING®

©2016, ©2017 SERENE LIVING
PLEASANT GROVE, UT 84062

**We will be happy to assist you with any questions.
Please email our Customer Service Department at
customerservice@newgreenair.com or call 1-888-548-0040.
We will return your call within 24 hours.**

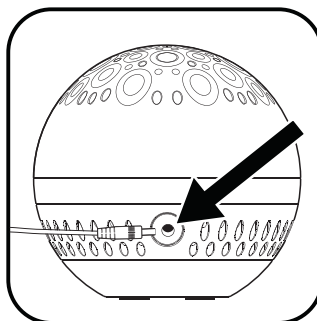
- For best results, please use type 'AA' alkaline batteries
- Install only new batteries of the same type in the product
- Failure to insert batteries in the correct polarity, as indicated in the battery compartment, may shorten the life of the batteries or cause batteries to leak
- Do not mix old and new batteries
- Do not mix Alkaline, Standard (Carbon-Zinc) or Rechargeable (Nickel Cadmium) or (Nickel Metal Hydride) batteries
- Do not dispose of batteries in fire
- Batteries should be recycled or disposed of as per state and local guidelines

Option #1 - USB

Step 1: Select a power source.

Choose from
Option #1 - USB or
Option #2 - 2(AA) Batteries

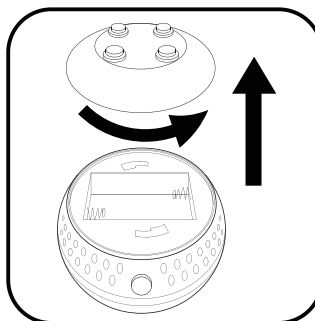
If both batteries and
USB cable are used,
the USB will draw
power first.



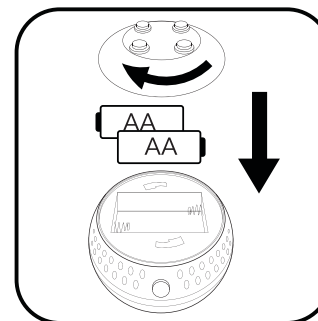
Connect the USB cable to the diffuser and connect to your PC or wall adapter.

*** NOTE: This step is only necessary if using the USB cable.**

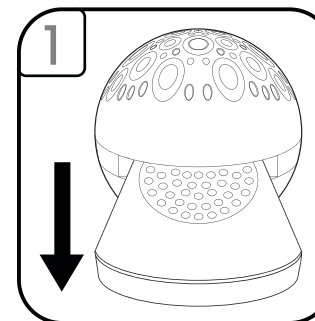
Option #2 - Batteries



Flip the diffuser over and rotate the battery cover to remove from the base.

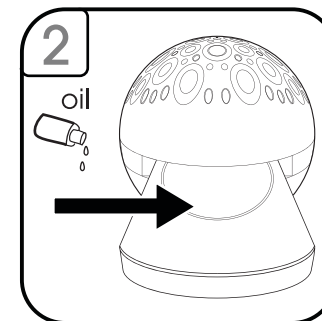


Insert (2) AA batteries and replace the battery cover by rotating it back on the base.



Pull out the tray from the diffuser base.

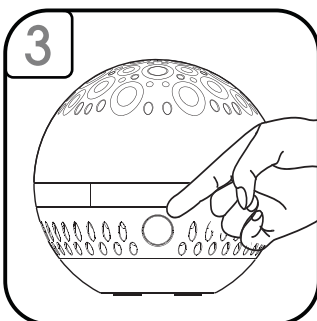
*** Do not over-saturate the pad**



Place a pad inside of the tray.

Add 10 to 15 drops of essential oil on the refill pad.

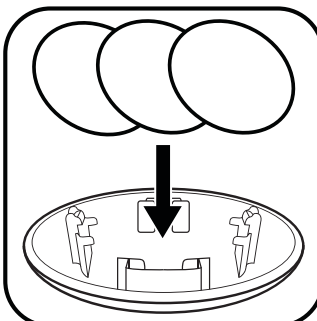
Slide the tray back into the diffuser base.



To begin diffusing, press the power button.

To turn off diffusing, press the button a 2nd time.

*** There is no automatic shut-off.**



To access the refill storage compartment, flip the diffuser over and remove the battery cover. (See instruction panel #4)

Up to 3 pads can be stored in this location.

*** 1 pad can be used for up to 30 days per 1 type of essential oil.**

Cleaning:

- Remove pad and wipe with warm water & clean as follows:
 - Wipe with soft damp cloth to clean.
 - Wipe with soft cloth and rubbing alcohol when needed to break up excessive oil residue.
- We recommend cleaning the unit every time you change oils.
- Do not use detergents or abrasive agents to clean the diffuser unit.

Do not return this diffuser to the retailer. Please contact the manufacturer's customer service for assistance.

SYMPTOM	CAUSE	SOLUTION
Diffuser not operating	The batteries are low	Replace with (3) brand new AA batteries
	USB cable not connected	Connect the USB cable to PC
	Not receiving enough power	Check USB port power supply Do not use splitter
No, Low or Unusual Scent	No or low power	Replace with (3) brand new AA batteries
	Room is too large	Recommended coverage is "Up to 200 sq. ft."
	Not enough oil	Oils strength varies, we recommend up to 30 drops but more may be used if preferred. *Do not over-saturate pad
	Not changing refill pad with new oil scent	We recommend using a different pad for each oil scent
	Not cleaning the diffuser when changing oils	Oils can leave behind some aroma. Follow cleaning instructions when changing to a new oils or every few uses for best results.

CAUTION: Keep away from children and pets. Do not use on wooden or painted surfaces that can be damaged by essential oil. Keep the unit upright at all times. Do not tilt unit at any time as water may spill and damage furnishings and fabrics.

