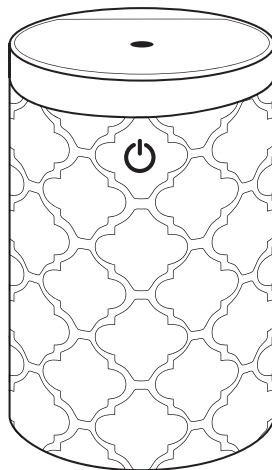


ModelloDiffuser















instructions & care



PRECAUTION

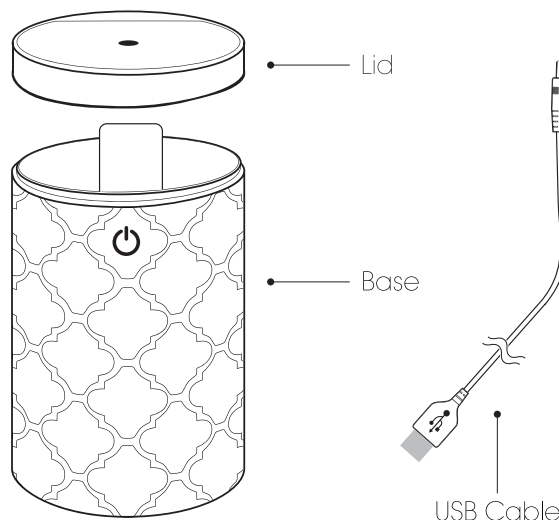
DO NOT USE DISTILLED WATER
Please read the instructions carefully before using.
Manufacturer accepts no liability for damage caused by incorrect use of the Essential Oil Diffuser.

 Warning and cautions  No allowed actions  Strictly prohibited

	1. Shut off and unplug the power before cleaning
	2. Clean the unit by rinsing the water tank and wiping it dry with a clean cloth
	3. Do not use detergents or abrasive agents to clean the diffuser unit
	4. Clean the unit when changing to a different oil
	5. Use the original adapter provided by the manufacturer
	6. If you don't use the device for a long time, unplug and pour water out
	7. Never use steamed water or very cold water.
	8. Never touch water level sensor and avoid product hitting other objects
	9. Never put your hand above the ceramic disc when product is working, as this could cause pain and damage the machine
	10. Never wrap the adapter with a cloth or paper, etc. Otherwise, it cannot dissipate heat normally and may cause deformation and burn the membrane from a short circuit. Never touch the adapter with wet hands.
	11. Do not use other liquids except for water & drops of essential oil
	12. Do not aim the device at walls, ceilings, furniture surfaces as excess moisture could cause water damage.
	13. Do not take this unit apart exposing electrical parts. Email customer service for assistance and guarantee information.
	14. Never place on loose fabric that can block air flow and prevent the unit from misting and ventilating properly.

Parts 1

Please read the instructions before usage.



Congratulations on your purchase of the Nature's Remedy Modello Diffuser.

Specifications 2

Item No	1099
Color	White
LED Lights	Color rotating/Off
Misting Modes	On/Off
Capacity	60 ml
Run Time	Up to 6 hours (auto shut off)
Coverage	Up to 400 square feet
Voltage	DC 5V, 5V-1A
Adapter	12W Auto or 100-240V Wall

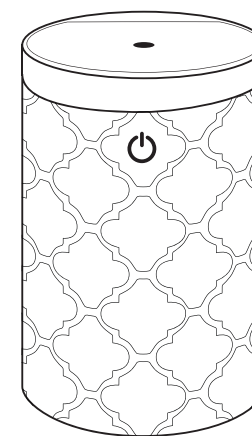
LIMITED ONE YEAR GUARANTEE

Purchase of this diffuser includes a One Year Limited Guarantee that covers manufacturing defects. It excludes normal wear and tear, damage caused by improper use, oil damage to the outside of the diffuser or oil damage to any other personal materials that the oil may come into contact with.

If you believe your unit is defective or malfunctioning, please contact us at 888-548-0040.

Note that customers are responsible for return shipping costs if seeking replacement, even when covered by a guarantee. Manufacturer reserves sole discretion to determine whether replacement is needed. All diffusers sent to manufacturer for inspection must be clean and free of any oil residue or it will be returned without inspection.

THIS GUARANTEE IS EXCLUSIVE OF ALL OTHER GUARANTEES OFFERED BY THE MANUFACTURER, EXPRESSED OR IMPLIED, ALL OF WHICH ARE EXPRESSLY DISCLAIMED.



We will be happy to assist you with any questions. Please contact our Customer Service Department at 1-888-548-0040. All calls are returned within 24 hours.



© 2019 NATURE'S REMEDY
CLEVELAND, OH 44130 MADE IN CHINA
www.newgreenair.com

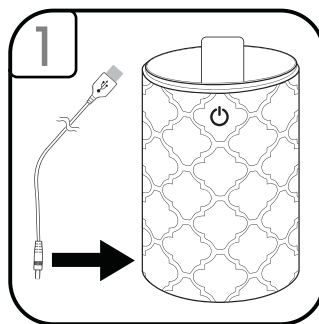
Modello diffuser allows you to use your essential oils anywhere you go. The diffuser uses high frequency ultrasonic technology to mist essential oils into a fine mist. Modello works great in your home, office or car.

CAUTION:

- DO NOT FILL BASE UNDER RUNNING WATER.
- DO NOT USE PURIFIED OR DISTILLED WATER.
- DO NOT MOVE ONCE UNIT HAS BEEN FILLED WITH WATER.

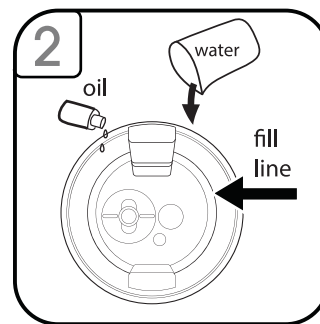
* USB power source output requirement: 5V-1A or higher.

* Compatible with most USB wall chargers and in-car 12V accessory outlet (cigarette lighter outlet) USB power adapters.



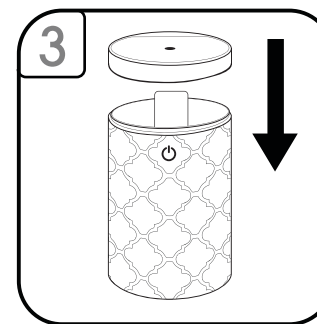
Plug the USB cable into the base of the diffuser.

Plug the USB cable into a source of power.

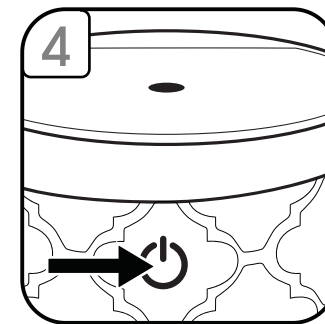


Fill with regular tap water up to the max fill line.

Add up to 5 drops of your essential oil.



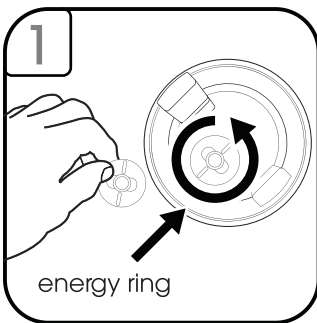
Lower cover onto base.



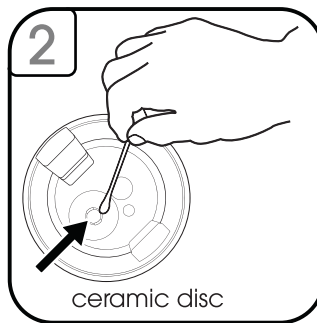
Touch the power icon once to begin misting with lights on.

Touch the power icon twice to turn the lights off and continue misting.

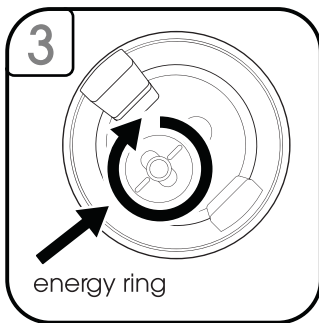
Touch the power icon three times to turn the diffuser off.



First, unlock the energy ring.



Using a cotton swab with alcohol, gently clean the ceramic disc to remove oil residue.



After cleaning, replace the energy ring.

The energy ring must be in place for the diffuser to properly operate.

Cleaning:

- Rinse with warm water & wipe clean as follows.
 - Remove the energy ring
 - Wipe with soft damp cloth to clean.
 - Wipe with soft cloth and rubbing alcohol when needed to break up excessive oil residue.
 - Replace energy ring after cleaning.
- We recommend cleaning the unit every time you change oils.
- Do not use detergents or abrasive agents to clean the diffuser unit.

Do not return this diffuser to the retailer. Please contact the manufacturer's customer service for assistance.

SYMPTOM	CAUSE	SOLUTION
No Mist	Using incorrect water, distilled or purified	Use Tap Water (without filter)
	Unit is out of water	Add additional water
No Mist or Little Mist	Unit needs to be cleaned. Oils are clinging to ceramic disc or sensor	Clean unit as advised in instructions with clean water & clean ceramic disc/sensor with brush or swab.
	Water level is higher than max level line	Clean unit and add water 1/2 way to fill line and additional water after getting mist.
Blinking Lights	Water level indicator is dirty	Clean unit as advised. Pay particular attention to swab the sensor/disc inside the bottom of unit.
Unit will not stop running even though empty	Water level indicator is dirty	Clean unit as advised. Pay particular attention to swab the sensor/disc inside the bottom of unit.
No misting and unit is spraying water	Water is too cold	Change to warmer water

CAUTION: Keep away from children and pets. Do not use on wooden or painted surfaces that can be damaged by essential oil. Keep the unit upright at all times. Do not tilt unit at any time as water may spill and damage furnishings and fabrics.

