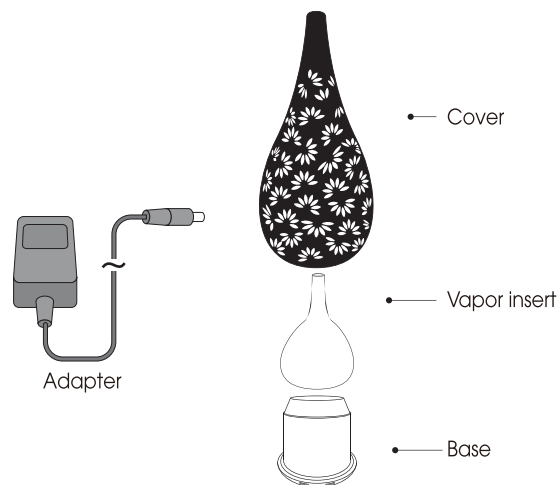


INSTRUCTIONS & CARE



Please read the instructions carefully before using.



Congratulations on your purchase of the Nature's Remedy Kate Essential Oil Diffuser.

Item No	1259
Color	Black
Water Capacity	100ml
Run Time	7 hours continuous/14 hours alternating
Light Mode	Warm white/Color rotating/Fixed/Off
Coverage	Up to 1,000 square feet
Rated Power	12 W
Adapter Power	100-240V, 24V 0.5A

PRECAUTION

DO NOT USE DISTILLED WATER

Please read the instructions carefully before using. Manufacturer accepts no liability for damage caused by incorrect use of the Essential Oil Diffuser.

⚠ Warning and cautions ⚡ No allowed actions ⚡ Strictly prohibited

⚠	1. Shut off and unplug the power before cleaning
⚠	2. Clean the unit by rinsing the water tank and wiping it dry with a clean cloth
⚡	3. Do not use detergents or abrasive agents to clean the diffuser unit
⚠	4. Clean the unit when changing to a different oil
⚠	5. Use the original adapter provided by the manufacturer
⚠	6. If you don't use the device for a long time, unplug and pour water out
⚡	7. Never use steamed water or very cold water.
⚡	8. Never touch water level sensor and avoid product hitting other objects
⚡	9. Never put your hand above the ceramic disc when product is working, as this could cause pain and damage the machine
⚡	10. Never wrap the adapter with a cloth or paper, etc. Otherwise, it cannot dissipate heat normally and may cause deformation and burn the membrane from a short circuit. Never touch the adapter with wet hands.
⚡	11. Do not use other liquids except for water & drops of essential oil
⚡	12. Do not aim the device at walls, ceilings, furniture surfaces as excess moisture could cause water damage.
⚡	13. Do not take this unit apart exposing electrical parts. Email customer service for assistance and guarantee information.
⚠	14. Never place on loose fabric that can block air flow and prevent the unit from misting and ventilating properly.

LIMITED ONE YEAR GUARANTEE

Purchase of this diffuser includes a One Year Limited Guarantee that covers manufacturing defects. It excludes normal wear and tear, damage caused by improper use, oil damage to the outside of the diffuser or oil damage to any other personal materials that the oil may come into contact with.

If you believe your unit is defective or malfunctioning, please contact us at 888-548-0040.

Note that customers are responsible for return shipping costs if seeking replacement, even when covered by a guarantee. Manufacturer reserves sole discretion to determine whether replacement is needed. All diffusers sent to manufacturer for inspection must be clean and free of any oil residue or it will be returned without inspection.

THIS GUARANTEE IS EXCLUSIVE OF ALL OTHER GUARANTEES OFFERED BY THE MANUFACTURER, EXPRESSED OR IMPLIED, ALL OF WHICH ARE EXPRESSLY DISCLAIMED.

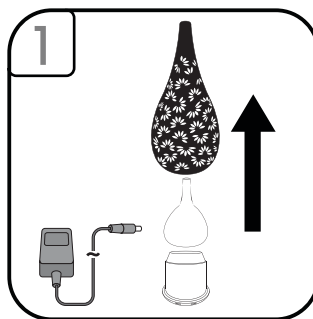


We will be happy to assist you with any questions. Please contact our Customer Service Department at 1-888-548-0040. All calls are returned within 24 hours.



© 2019 NATURE'S REMEDY
CLEVELAND, OH 44130 MADE IN CHINA
www.newgreenair.com

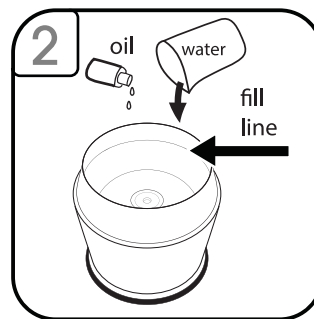
The Kate diffuser uses high frequency ultrasonic technology that vibrates water inside the unit into an ultra fine mist. When essential oils are added, they are immediately dispersed into the air, providing immediate healthful benefits while helping to ionize the air. It can be used in a bedroom, living room, office area or anywhere you want to create a relaxing, healthful-environment.



Remove the glass vase cover and the vapor insert.

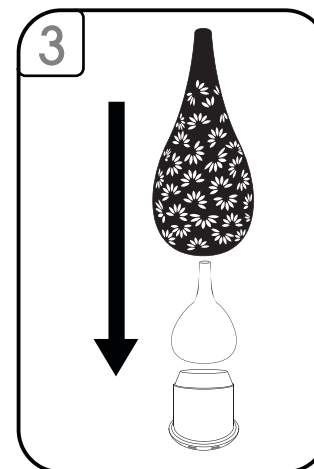
Plug the cable into the unit first then connect to a wall outlet.

**DO NOT FILL ABOVE MAX LINE.
DO NOT ALLOW WATER TO ENTER THE AIR VENT.
DO NOT FILL BASE UNDER RUNNING WATER.**



Using a cup, fill with regular tap water up to the max fill line.

Add 5 to 10 drops of your essential oil.



Replace vapor insert, check for alignment.

Then, place the glass vase over the base.



Press the power icon to begin.

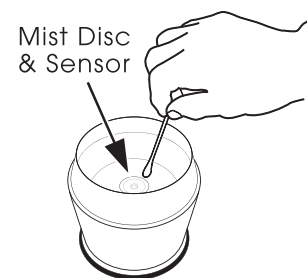
1st press for continuous operation.

2nd press for alternating operation.

3rd press to turn off diffusing.



Mist Disc & Sensor



Using a cotton swab with warm water, gently clean the mist disc and sensor located at the inside bottom of the base.

To control lights press the light icon.

1st press to turn on warm white light.

2nd press for color rotating lights.

3rd press to select displayed color.

4th press to turn lights off.

Cleaning:

- Rinse with warm water and clean as follows:
 - i. Wipe with soft damp cloth to clean.
 - ii. Wipe with soft cloth and rubbing alcohol when needed to break up excessive oil residue.
 - iii. Use a cotton swab and water or rubbing alcohol to clean the ceramic disc inside the base.
***See diagram to the left.**
- We recommend cleaning the unit every time you change oils or every 2 uses.
- Do not use detergents or abrasive agents to clean the diffuser unit.

**Do not return this diffuser to the retailer.
Please contact the manufacturer's customer service for assistance. 1-888-548-0040**

SYMPTOM	CAUSE	SOLUTION
No Mist	Using incorrect water, distilled or purified	Use Tap Water (without filter)
	Unit is out of water	Add additional water
No Mist or Little Mist	Unit needs to be cleaned. Oils are clinging to ceramic disc or sensor	Clean unit as advised in instructions with clean water & clean ceramic disc/sensor with brush or swab.
	Water level is higher than max level line	Clean unit and add water 1/2 way to fill line and additional water after getting mist.
	Nozzle or cover are not assembled correctly	Make sure the cover is aligned properly.
Blinking Lights	Water level indicator is dirty	Clean unit as advised. Pay particular attention to swab the sensor/disc inside the bottom of unit.
Unit will not stop running even though empty	Water level indicator is dirty	Clean unit as advised. Pay particular attention to swab the sensor/disc inside the bottom of unit.
No misting and unit is spraying	Water is too cold	Change to warmer water.

CAUTION: Keep away from children and pets. Do not use on wooden or painted surfaces that can be damaged by essential oil. Keep the unit upright at all times. Do not tilt unit at any time as water may spill and damage furnishings and fabrics.