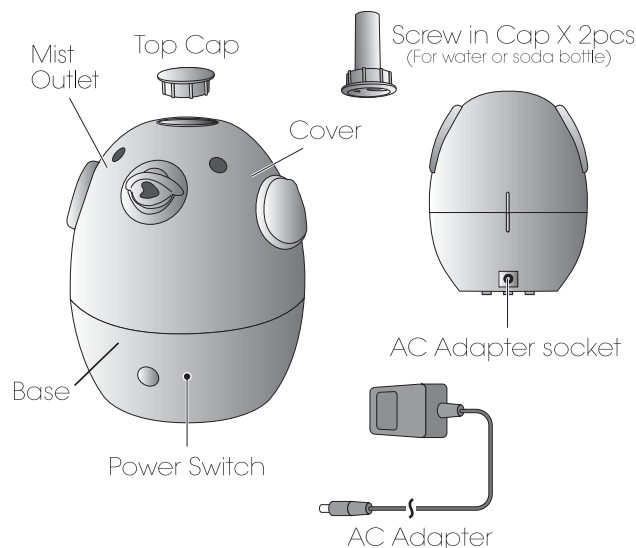


newgreenair.com

Please read the instructions carefully before use.



Congratulations on your purchase of the Greenair Creature Comforts Diffuser.

Item No	530
Color	Yellow
Modes	On/Off
Water Capacity	200 ml
Run Time	8 hrs
Special Features	2 water bottle adapters included for extended run time
Coverage	1,000 square feet
Rated Power	12 W
Adapter Power	24V-0.5A

PRECAUTION 3

DO NOT USE DISTILLED WATER

Please read the instructions carefully before using. Manufacturer accepts no liability for damage caused by incorrect use of the Essential Oil Diffuser.

⚠ Warning and cautions ⚡ Not allowed ⚠ Strictly prohibited

⚠	1. Shut off and unplug the power before cleaning
⚠	2. Clean the unit by rinsing the water tank and wiping it dry with a clean cloth
⚡	3. Do not use detergents, solvents or abrasive agents to clean the diffuser unit
⚠	4. Clean the unit when changing to a different oil
⚠	5. Use the original adapter provided by the manufacturer
⚠	6. If you don't use the device for a long time, unplug and pour water out
⚡	7. Never use steamed water or very cold water.
⚡	8. Never touch water level sensor and avoid product hitting other objects
⚡	9. Never put your hand above the ceramic disc when product is working, as this could cause pain and damage the machine
⚠	10. Never wrap the adapter with a cloth or paper, etc. Otherwise, it cannot dissipate heat normally and may cause deformation and burn the membrane from a short circuit. Never touch the adapter with wet hands.
⚡	11. Do not use other liquids except for water & drops of essential oil
⚡	12. Do not aim the device at walls, ceilings, furniture surfaces as excess moisture could cause water damage.
⚠	13. Do not take this unit apart exposing electrical parts. Email customer service for assistance and guarantee information.
⚠	14. Never place on loose fabric that can block air flow and prevent the unit from misting and ventilating properly.

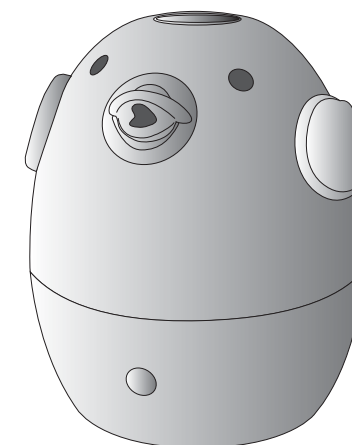
LIMITED ONE YEAR GUARANTEE

Purchase of this diffuser includes a One Year Limited Guarantee that covers manufacturing defects. It excludes normal wear and tear, damage caused by improper use, oil damage to the outside of the diffuser or oil damage to any other personal materials that the oil may come into contact with.

If you believe your unit is defective or malfunctioning, please contact us at 888-548-0040.

Note that customers are responsible for return shipping costs if seeking replacement, even when covered by a guarantee. Manufacturer reserves sole discretion to determine whether replacement is needed. All diffusers sent to manufacturer for inspection must be clean and free of any oil residue or it will be returned without inspection.

THIS GUARANTEE IS EXCLUSIVE OF ALL OTHER GUARANTEES OFFERED BY THE MANUFACTURER, EXPRESSED OR IMPLIED, ALL OF WHICH ARE EXPRESSLY DISCLAIMED.

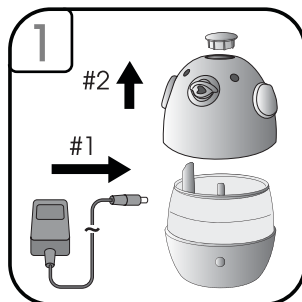


We will be happy to assist you with any questions. Please contact our Customer Service Department at 1-888-548-0040. All calls are returned within 24 hours.



© 2016, © 2017 GREENAIR INC.
CLEVELAND, OH 44130 MADE IN CHINA
www.newgreenair.com

Greenair's Creature Comfort diffusers are great to get children involved in an aromatherapy practice. It's designed to be enjoyed as a diffuser or a humidifier by using one of the bottle attachments. This ultrasonic diffuser will bring hours of aromatherapy into your home.

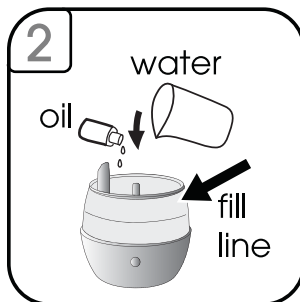


#1: First, plug the power to the unit then connect to a wall outlet.

#2: Remove the cover.

CAUTION:

- DO NOT FILL BASE UNDER RUNNING WATER.
- DO NOT USE PURIFIED OR DISTILLED WATER.
- DO NOT MOVE ONCE UNIT HAS BEEN FILLED WITH WATER.

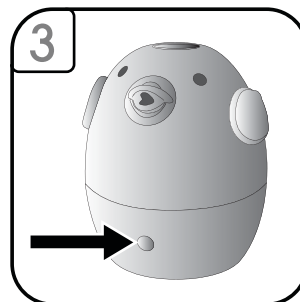


Using a cup, fill with regular tap water up to the max fill line.

Do not fill above max fill line.

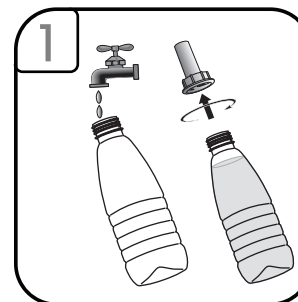
Add up to 5 drops of your essential oil.

Reassemble the diffuser.



To begin misting, press the power button once.

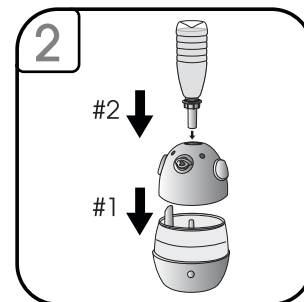
Press again to turn off misting.



#1: First, add tap water to your own 6-8 fl.oz. water bottle. **DO NOT ADD OIL INTO WATER BOTTLE.**

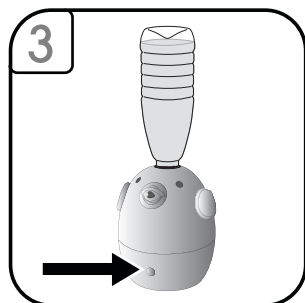
#2: Screw on the cap to the water bottle.

#3: Add 5 drops of essential oil into the diffuser base.



Next assemble the unit by replacing the cover.

Next, insert your water bottle with cap installed into the cover of the diffuser.



To begin misting, press the power button once.

Press again to turn off misting.



Use a cotton swab with warm water, gently clean the mist disc and sensor located at the inside bottom of the base.

Cleaning:

- Rinse with warm water and clean as follows:
 - Wipe with soft damp cloth to clean.
 - Wipe with soft cloth and rubbing alcohol when needed to break up excessive oil residue.
 - Use a cotton swab and water or rubbing alcohol to clean the ceramic disc inside the base.

***See diagram to the left.**
- We recommend cleaning the unit every time you change oils or every 2 uses.
- Do not use detergents or abrasive agents to clean the diffuser unit.

Do not return this diffuser to the retailer. Please contact the manufacturer's customer service for assistance. 1-888-548-0040

SYMPTOM	CAUSE	SOLUTION
No Mist	Using incorrect water, distilled or purified Unit is out of water	Use Tap Water (without filter) Add additional water
No Mist or Little Mist	Unit needs to be cleaned. Oils are clinging to ceramic disc or sensor	Clean unit as advised in instructions with clean water & clean ceramic disc/sensor with brush or swab.
	Water level is higher than max level line	Remove excess water and restart the diffuser.
	Cover is not properly aligned	Line up the lines on the back of the unit.
Blinking Lights	Water level indicator is dirty	Clean unit as advised. Pay particular attention to swab the sensor/disc inside the bottom of unit.
Unit will not stop running even though empty	Water level indicator is dirty	Clean unit as advised. Pay particular attention to swab the sensor/disc inside the bottom of unit.
No misting and unit is spraying water	Water is too cold	Change to warmer water.

CAUTION: Keep away from children and pets. Do not use on wooden or painted surfaces that can be damaged by essential oil. Keep the unit upright at all times. Do not tilt unit at any time as water may spill and damage furnishings and fabrics.

