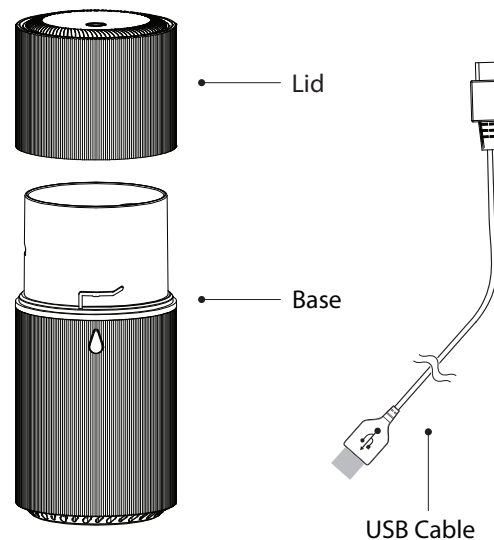




SERENE LIVING®

newgreenair.com

Please read the instructions before usage.



Congratulations on your purchase of the Serene Living Energia diffuser.

Item No	2010/2287
Color	White/ Black
LED Lights	Warm White/ Color rotating/ Fixed/Off
Misting Modes	Continuous/Off
Capacity	50ml
Run Time	up to 2.5 hours on full charge/up to 6 hours plugged in
Coverage	Up to 400sq ft.
Voltage	DC 5V, 5V-2A
Battery	Rechargeable Lithium

## Precaution

3

## DO NOT USE DISTILLED WATER

Please read the instructions carefully before using.  
 Manufacturer accepts no liability for damage caused by  
 incorrect use of the Essential Oil Diffuser.

Warning and cautions	Not allowed	Strictly prohibited
⚠	⊘	⚡
1. Shut off and unplug the power before cleaning		
2. Clean the unit by rinsing the water tank and wiping it dry with a clean cloth		
3. Do not use detergents, solvents or abrasive agents to clean the diffuser unit		
4. Clean the unit when changing to a different oil		
5. Use the original adapter provided by the manufacturer		
6. If you don't use the device for a long time, unplug and pour water out		
7. Never use steamed water or very cold water.		
8. Never touch water level sensor and avoid product hitting other objects		
9. Never put your hand above the ceramic disc when product is working, as this could cause pain and damage the machine		
10. Never wrap the adapter with a cloth or paper, etc. Otherwise, it cannot dissipate heat normally and may cause deformation and burn the membrane from a short circuit. Never touch the adapter with wet hands.		
11. Do not use other liquids except for water & drops of essential oil		
12. Do not aim the device at walls, ceilings, furniture surfaces as excess moisture could cause water damage.		
13. Do not take this unit apart exposing electrical parts. Email customer service for assistance and guarantee information.		
14. Never place on loose fabric that can block air flow and prevent the unit from misting and ventilating properly.		

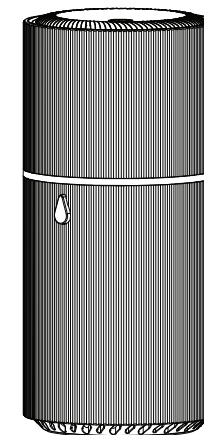
## Limited one year guarantee

Purchase of this diffuser includes a One Year Limited Guarantee that covers manufacturing defects. It excludes normal wear and tear, damage caused by improper use, oil damage to the outside of the diffuser or oil damage to any other personal materials that the oil may come into contact with.

If you believe your unit is defective or malfunctioning, please contact us at 888-548-0040.

Note that customers are responsible for return shipping costs if seeking replacement, even when covered by a guarantee. Manufacturer reserves sole discretion to determine whether replacement is needed. All diffusers sent to manufacturer for inspection must be clean and free of any oil residue or it will be returned without inspection.

THIS GUARANTEE IS EXCLUSIVE OF ALL OTHER GUARANTEES OFFERED BY THE MANUFACTURER, EXPRESSED OR IMPLIED, ALL OF WHICH ARE EXPRESSLY DISCLAIMED.



We will be happy to assist you with any questions.  
 Please contact our Customer Service Department at  
 1-888-548-0040. All calls are returned within 24 hours.

SERENE LIVING®

© 2020 GREENAIR INC.  
 Cleveland, OH 441415 Made in China  
[www.newgreenair.com](http://www.newgreenair.com)

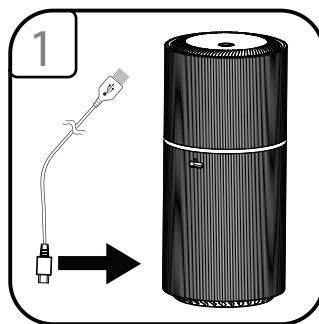
Energia diffuser allows you to use your essential oils anywhere you go. Energia delivers instant healthful benefits by simply adding water and essential oil into the base and turning it on. Energia works great everywhere.

**CAUTION:**

- DO NOT FILL BASE UNDER RUNNING WATER.
- DO NOT USE PURIFIED OR DISTILLED WATER.
- DO NOT MOVE ONCE UNIT HAS BEEN FILLED WITH WATER.

\* USB power source output requirement: 5V-1A or higher.

\* Compatible with most USB wall chargers and in-car 12V accessory outlet (cigarette lighter outlet) USB power adapters.

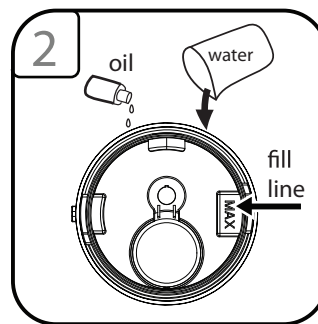


Plug the USB cable into the back of the diffuser.

Plug the USB cable into a source of power.

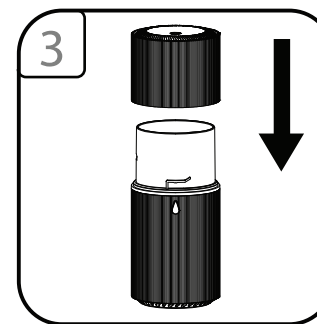
While the unit is charging, a red light will be visible, Above charge point.

Red light goes away when charge is full.

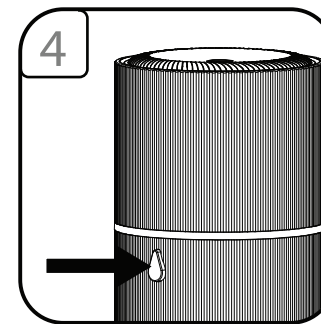


Fill with regular tap water up to the max fill line.

Add up to 5-10 drops of your essential oil.



Lower cover onto base. Turn clockwise to secure.



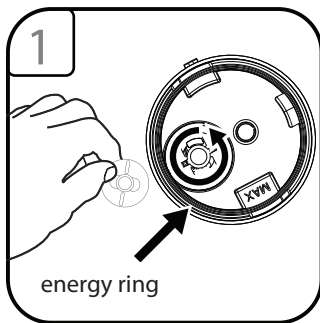
1st press to turn on the mist and warm white light.

2nd press for color rotating lights with continuous mist.

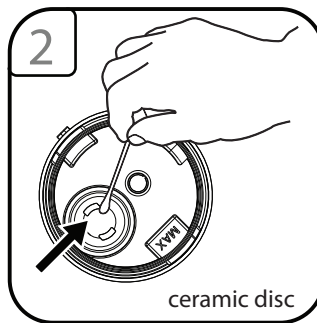
3rd press to select displayed color while keeping a continuous mist.

4th press to turn lights off with continuous mist.

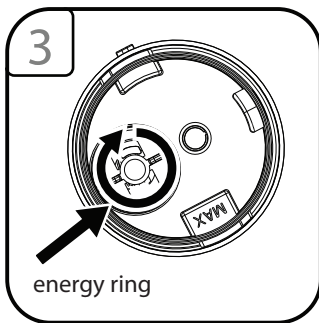
5th press to turn the unit off.



First, unlock the energy ring and remove.



Using a cotton swab with warm water, gently clean the ceramic disc to remove oil residue.



After cleaning, replace the energy ring turn to secure.

The energy ring must be in place for the diffuser to properly operate.

**Cleaning:**

- Rinse with warm water & wipe clean as follows,
  - Remove the energy ring
  - Wipe with soft damp cloth to clean.
  - Wipe with soft cloth and rubbing alcohol when needed to break up excessive oil residue.
  - Replace energy ring after cleaning.

- We recommend cleaning the unit every time you change oils.

- Do not use detergents or abrasive agents to clean the diffuser unit.

Do not return this diffuser to the retailer. Please contact the manufacturer's customer service for assistance.

SYMPTOM	CAUSE	SOLUTION
No Mist	Using incorrect water, distilled or purified	Use Tap Water (without filter)
	Unit is out of water	Add additional water
No Mist or Little Mist	Unit needs to be cleaned. Oils are clinging to ceramic disc or sensor	Clean unit as advised in instructions with clean water & clean ceramic disc/sensor with brush or swab.
	Water level is higher than max level line	Clean unit and add water 1/2 way to fill line and additional water after getting mist.
Blinking Lights	Water level indicator is dirty	Clean unit as advised. Pay particular attention to swab the sensor/disc inside the bottom of unit.
Unit will not stop running even though empty	Water level indicator is dirty	Clean unit as advised. Pay particular attention to swab the sensor/disc inside the bottom of unit.
No misting and unit is spraying water	Water is too cold	Change to warmer water

**CAUTION:** Keep away from children and pets. Do not use on wooden or painted surfaces that can be damaged by essential oil. Keep the unit upright at all times. Do not tilt unit at any time as water may spill and damage furnishings and fabrics.

