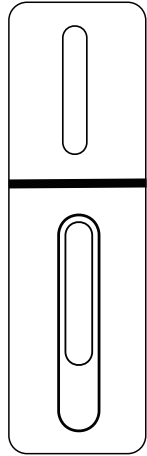


Immuno 2.0 Personal Essential Oil Diffuser

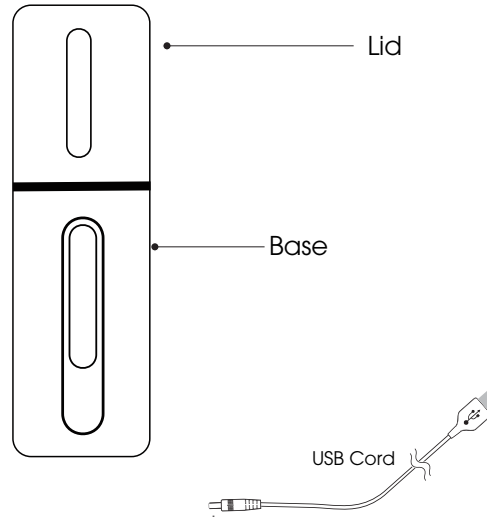
instructions & care



newgreenair.com

PARTS 1

Please read the instructions carefully before use.



Congratulations on your purchase of the Greenair Immuno 2.0 Diffuser.

SPECIFICATIONS 2

Item No	1679
Color	White
Operation Modes	On/Off
Water Capacity	15ml
Run Time	60 seconds
Light Modes	Blue Power Indicator Red Charging Light
Coverage	Up to 4 sq. ft.
Voltage	DC 5V
Power	1W

PRECAUTION 3

DO NOT USE DISTILLED WATER
Please read the instructions carefully before using.
Manufacturer accepts no liability for damage caused by incorrect use of the Essential Oil Diffuser.

- Warning and cautions
- Not allowed
- Strictly prohibited

	1. Shut off and unplug the power before cleaning
	2. Clean the unit by rinsing the water tank and wiping it dry with a clean cloth
	3. Do not use detergents, solvents or abrasive agents to clean the diffuser unit
	4. Clean the unit when changing to a different oil
	5. Use the original adapter provided by the manufacturer
	6. If you don't use the device for a long time, pour water out
	7. Never use steamed water or very cold water.
	8. Never touch water level sensor and avoid product hitting other objects
	9. Do not take this unit apart exposing electrical parts. Email customer service for assistance and guarantee information.
	10. Never wrap the adapter with a cloth or paper, etc. Otherwise, it cannot dissipate heat normally and may cause deformation and burn the membrane from a short circuit. Never touch the adapter with wet hands.
	11. Do not use other liquids except for water & drops of essential oil

LIMITED ONE YEAR GUARANTEE

Purchase of this diffuser includes a One Year Limited Guarantee that covers manufacturing defects. It excludes normal wear and tear, damage caused by improper use, oil damage to the outside of the diffuser or oil damage to any other personal materials that the oil may come into contact with.

If you believe your unit is defective or malfunctioning, please contact us at 888-548-0040.

Note that customers are responsible for return shipping costs if seeking replacement, even when covered by a guarantee. Manufacturer reserves sole discretion to determine whether replacement is needed. All diffusers sent to manufacturer for inspection must be clean and free of any oil residue or it will be returned without inspection.

THIS GUARANTEE IS EXCLUSIVE OF ALL OTHER GUARANTEES OFFERED BY THE MANUFACTURER, EXPRESSED OR IMPLIED, ALL OF WHICH ARE EXPRESSLY DISCLAIMED.

We will be happy to assist you with any questions. Please contact our Customer Service Department at 1-888-548-0040. All calls are returned within 24 hours.



© 2020 GREENAIR INC.
CLEVELAND, OH 44130 MADE IN CHINA
www.newgreenair.com

How it Works 4

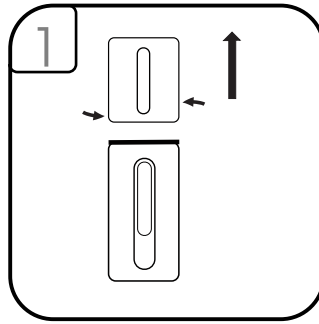
Greenair's Immuno 2.0 Diffuser goes where you go. It is designed to enjoy the benefits of aromatherapy throughout your day, even when you are not at home.

The Immuno 2.0 Diffuser delivers instant protection by simply adding water and oil to the base and turning it on.

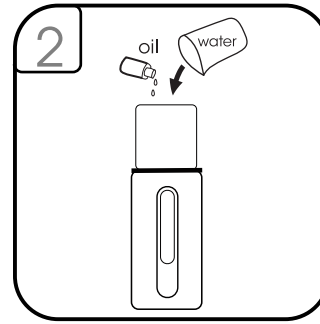
CAUTION:

- DO NOT FILL BASE UNDER RUNNING WATER.
- DO NOT USE PURIFIED OR DISTILLED WATER.

Operation 5



Twist the lid and pull up to remove the lid.



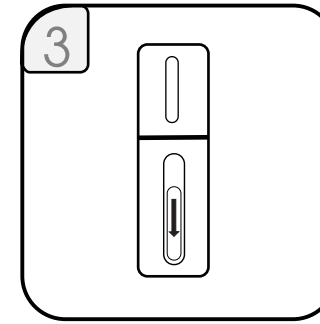
Using a cup, fill with regular tap water up to the max fill line.

Add a drop or two of your essential oil.

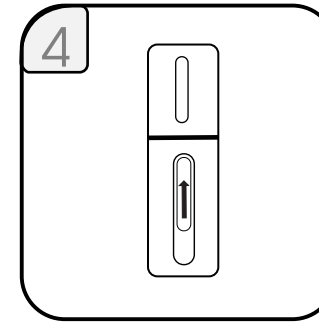
Reassemble the diffuser.

Do NOT Overfill.

Operation 6

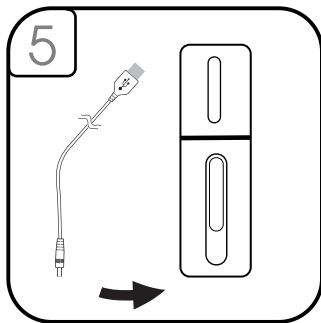


Slide the power switch down to turn on the diffuser.



Slide the power switch up to turn off the diffuser.

Operation 7



Using the included Cord, charge the unit when the unit flashes blue.

The diffuser will display a red light when charging

*Charge port can be found on the bottom of the unit.

Cleaning/Maintenance 8

Cleaning:

- Rinse with warm water & wipe clean as follows,
 - Wipe with soft damp cloth to clean.
 - Wipe with soft cloth and rubbing alcohol when needed to break up excessive oil residue.
 - Use a cotton swab and water or rubbing alcohol to clean the ceramic disc inside the base.
- We recommend cleaning the unit every time you change oils.
- Do not use detergents or abrasive agents to clean the diffuser unit.

Do not return this diffuser to the retailer. Please contact the manufacturer's customer service for assistance. 1-888-548-0040

www.newgreenair.com

Troubleshooting 9

SYMPTOM	CAUSE	SOLUTION
Little Mist or No Mist	No Battery Power	Charge the unit.
	Unit is out of water	Add water.
	Unit has too Much Water.	Remove excess water.
	Mist Disc needs maintained.	Clean unit as advised.
Blinking Blue Light	The unit has no battery power.	Charge the unit.
Unit Leaks	The unit's lid is not locked in place.	Make sure that the lid is secure.

CAUTION: Keep away from children and pets. Do not use on wooden or painted surfaces that can be damaged by essential oil. Keep the unit upright at all times. Do not tilt unit at any time as water may spill and damage furnishings and fabrics.

